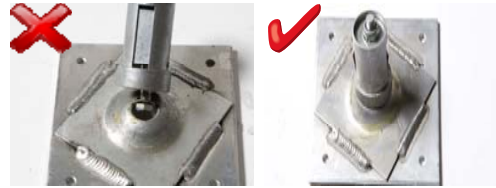


CASTORS



Castors:

- Check brake operates correctly
- No excessive wear or damage in the wheel, spigot and swivel bearings
- Wheel rotates freely on axle
- Removable castors retained securely by spring ball
- Fixed castors securely retained by expanding spigots



Base plates:

- No excessive buckling or corrosion
- Plate secure on stem
- Fit base plate into adjustable leg and check it is retained in position

TOEBOARDS & CLIPS



Boards:

- No splits or cracks
- No excessive warping

Clips (where fitted)

- Fit clip to lower tube to check operates correctly

ADVANCE GUARDRAIL



Advance Guardrail:

- Maximum deflection 5mm in 1000mm length
- No excessive denting or creasing
- No more than one dent in 300mm
- Swinging arm operates freely and locks securely
- No cracks, cuts, holes or excessive corrosion
- No damage, cracks in welds



Hooks:

- No damage or excessive corrosion and hook works correctly
- Latch hook onto a piece of frame tube. Using moderate to heavy force, ensure hook cannot become detached unintentionally

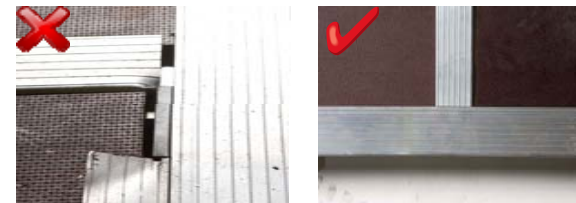
**Aluminium Mobile Access Tower
Inspection Guide**

PLATFORMS



Plywood:

- In place
- Secure
- No cracks, cuts, holes or rot
- Laminations intact
- Non-slip coating facing upwards, undamaged and no excessive paint plaster, oil or other contaminants



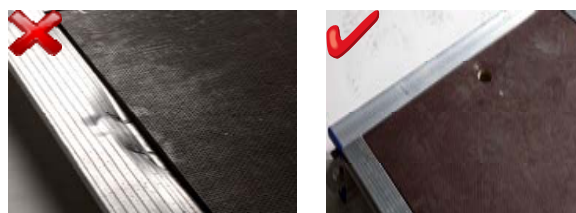
Platform Fixings:

- Rivets/screw heads in place
- Secure



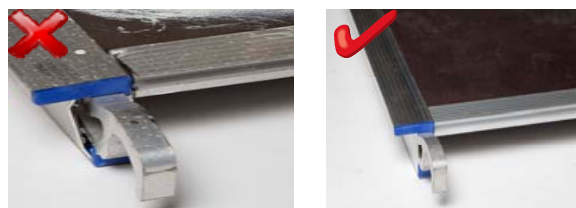
Trapdoor hinges and latch:

- In place
- Secure
- No excessive wear or corrosion
- Hinges, latch opening freely




Platform framework:

- No damage, cracks, holes or excessive corrosion especially around the hooks
- Check all rivets and fixings are secure
- Diagonal dimensions are equal within 5mm
- Check platform is flat within 15mm
- Wind locks operate correctly and easily
- Label showing maximum permissible platform load is in place, secure and legible



Please note: Periodically lubricate hinges



FRAMES



- Tubes and corner gussets:**
- Maximum deflection 5mm in 1000mm
 - No excessive denting or creasing
 - No more than one dent in 300mm length



- Joints:**
- No cracks or excessive corrosion in welds or surrounding metal
 - No cracks or excessive corrosion in castings
 - Joints at right angle



- Spigots:**
- In place and not distorted
 - Securely retained with no damage or excessive wear to any fixing
 - No damage or excessive wear to any interlock holes



- Built in Ladders:**
- Sides and rungs straight with no cracks, cuts or excessive corrosion.
 - No cracks or excessive corrosion in welds or surrounding metal
 - Rungs in place and secure



- Interlock Clip/ Locking device (where fitted):**
- In position and operating correctly
 - No damage, distortion, excessive wear or corrosion
 - retaining pin in place, undamaged and engages



- Folding Frames/Braces:**
- Frames/braces open and close
 - Retaining mechanism, locking pate or other locking devices in place, undamaged, operating correctly and with no excessive wear
 - All fixings, castings secure



- Labels:**
- Labels securely attached and legible

BRACES



- Tubes::**
- Maximum deflection 5mm in 1000mm length
 - No excessive denting or creasing
 - No more than one dent in a 300mm length
 - No cracks, cuts, holes or excessive corrosion



- Hooks:**
- No damage or excessive corrosion and hook working correctly
 - Latch hook onto a piece of frame tube. Using moderate to heavy force, ensure hook cannot become detached unintention-

STABILISERS



- Tubes:**
- Maximum deflection 5mm in 1000mm length
 - No excessive denting or creasing
 - No more than one dent in 300mm length
 - No cracks, cuts, holes or excessive corrosion, or excessive paint , plaster etc



- Clamps:**
- Clamps in place, undamaged and operating correctly
 - No cracks in castings
 - No damage or excessive wear to threads



- Feet:**
- Pivot rotates freely
 - No cracks, excessive wear or other damage
 - Check security of the fastenings for the pad/foot

ADJUSTABLE LEG



- All parts:**
- Stem is straight, free from dents with a maximum deflection of 5mm over the entire length
 - No cracks, cuts or holes or excessive wear or corrosion
 - Check retaining spring in place
 - Leg fits into frame tube and is retained by spring/plug
 - Castor fits into the adjustable leg
 - Locking Nut should move freely up and down leg