

Aluminium Mobile Access Tower

Maintenance and Repair Guide

Following an inspection of the scaffold components, the following maintenance and repair instructions can be used as necessary for any applicable defects.

PLATFORMS

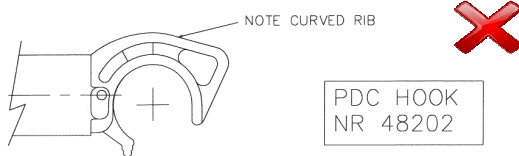
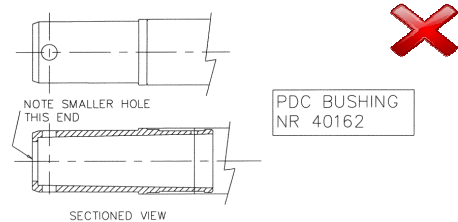
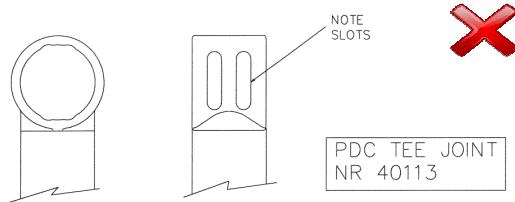
Clean and lubricate hinges of plat-



form trapdoors

FRAMES and BRACES

Damaged frames or castings other than the following can be repaired by TIG welding (5% silicon content)

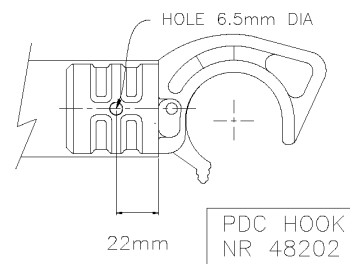


Weld repairs must be undertaken by a competent person using weld wire 4043A

Tube is manufactured using 6082 aluminium alloy
Weldable casting material is LM25

Frames members and braces which have any crack running along their length should be discarded

- Damaged hooks can be replaced or damaged braces shortened to a smaller standard size by removing the hook / damaged end with a square cut and replacing by new hook item 48202.
- Fully insert the hook into the frame.
- Drill a through hole centrally as shown below.
- Secure with a 6mm bolt and locknut.



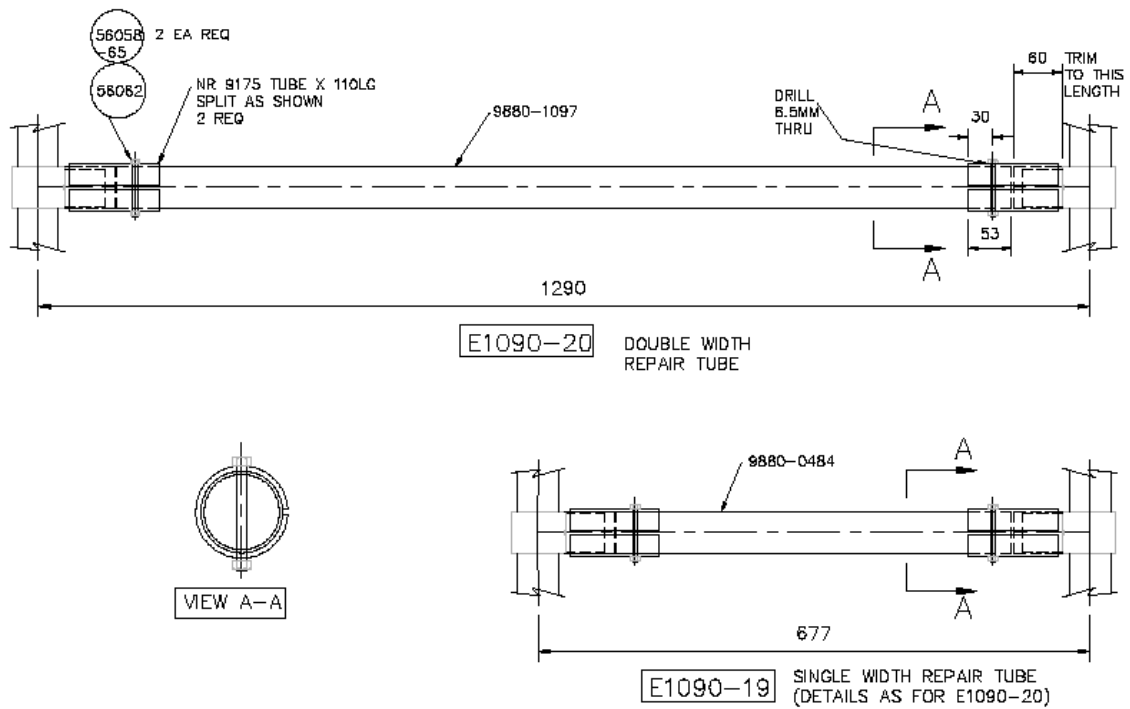
Damaged horizontal frame tubes can be repaired using the following kits:

Single width span: Repair cross tube E1090-19

Double width span: Repair cross tube E1090-20

Having removed the damaged section of tube by cutting square through the section leaving 60mm stub lengths as shown below, attach the appropriate repair kit and drill trough the remaining tube stub using a 6.5mm diameter drill.

Assemble as shown.



Dents in vertical frame tubes can be repaired using the Instant Upright De-dent Tool E6170.

