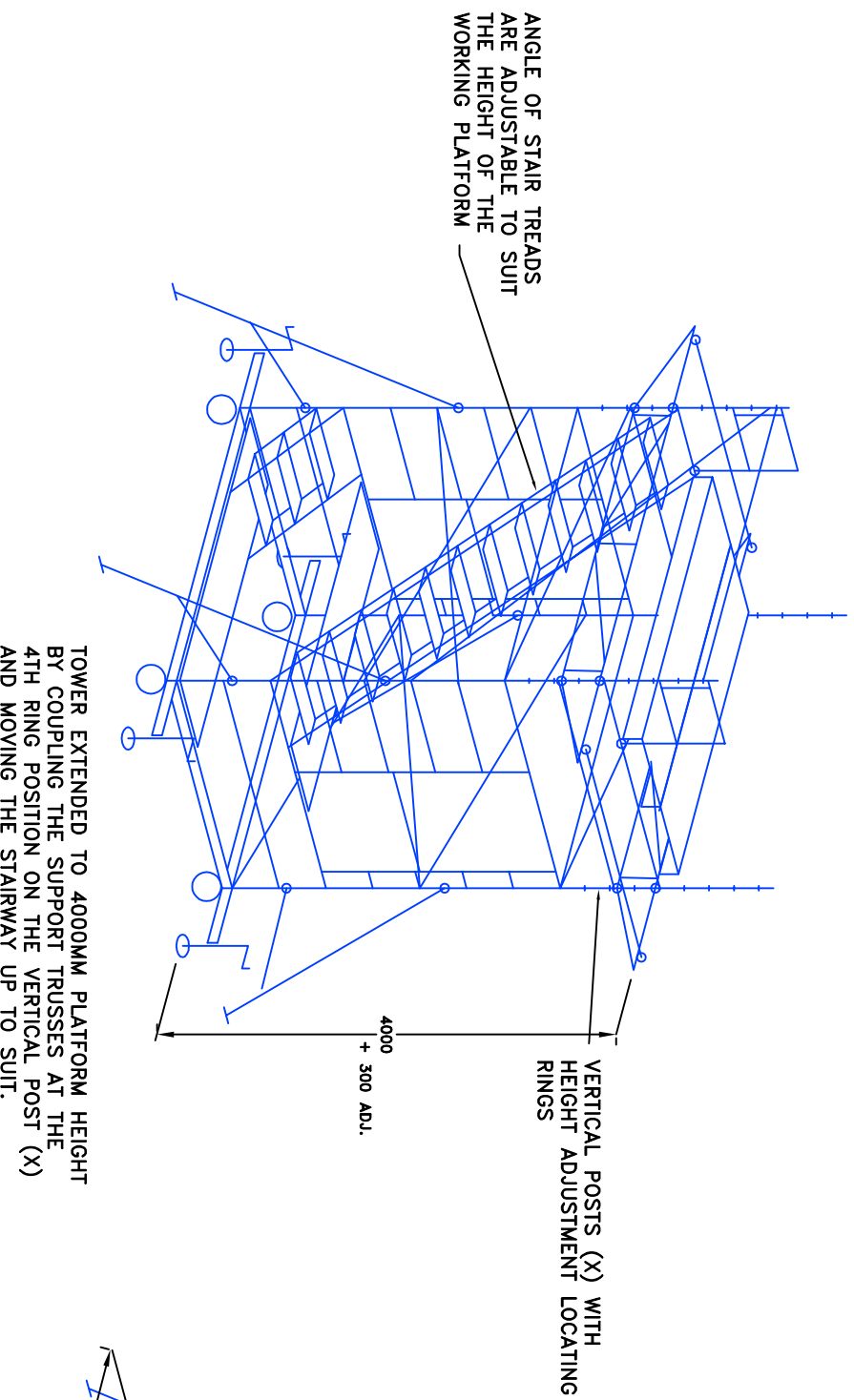
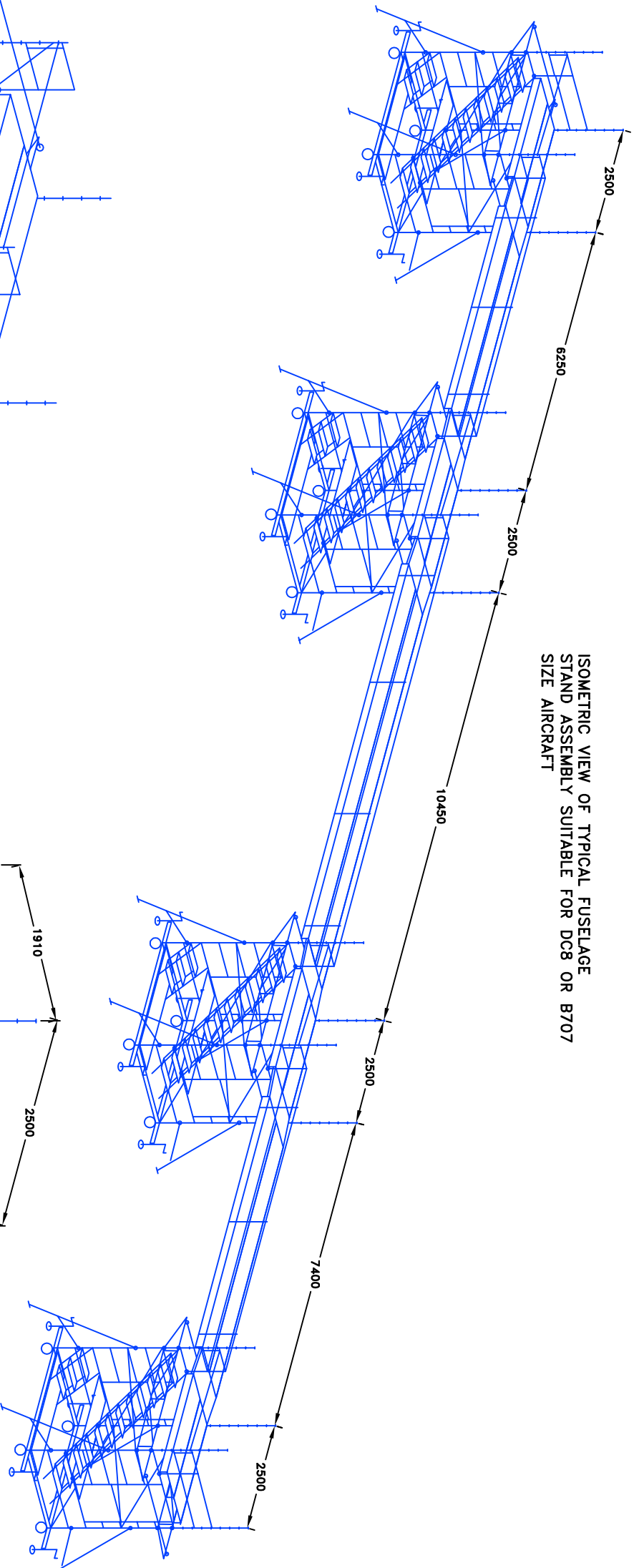
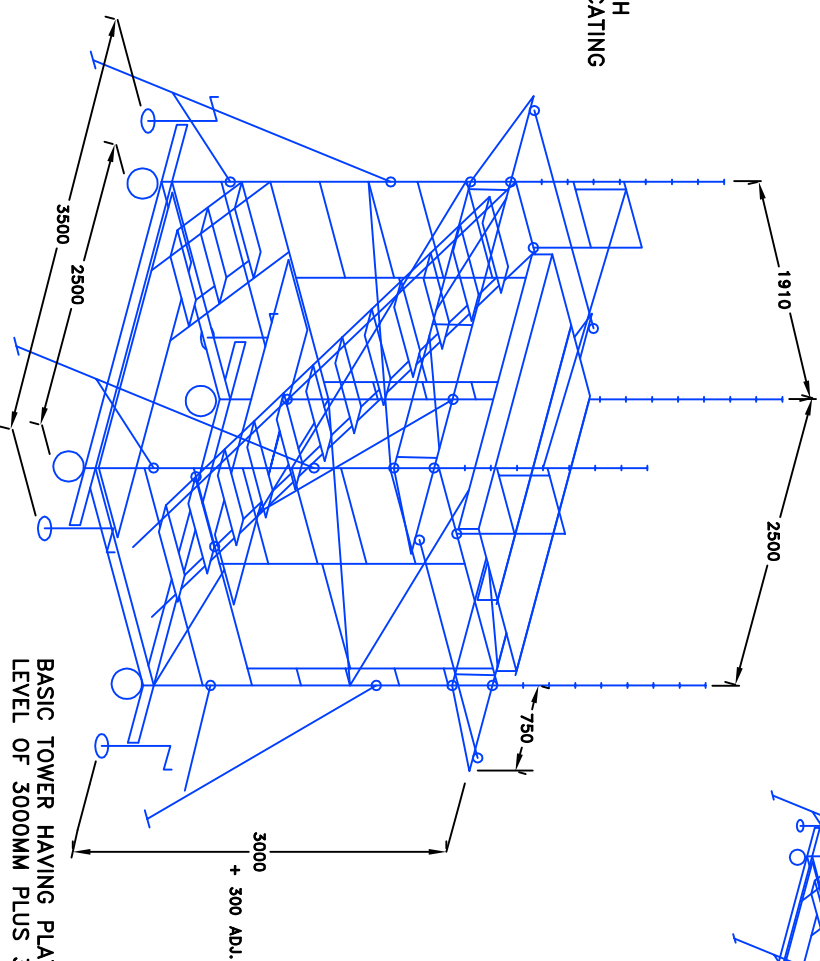


ISOMETRIC VIEW OF TYPICAL FUSELAGE
STAND ASSEMBLY SUITABLE FOR DC8 OR B707
SIZE AIRCRAFT



TOWER EXTENDED TO 4000MM PLATFORM HEIGHT
BY COUPLING THE SUPPORT TRUSSES AT THE
4TH RING POSITION ON THE VERTICAL POST (X)
AND MOVING THE STAIRWAY UP TO SUIT.
(OTHER DIMENSIONS AS BASIC TOWER)



BASIC TOWER HAVING PLATFORM
LEVEL OF 3000MM PLUS 300MM ADJUSTMENT

NOTES

1. WORKING PLATFORM IS 1220MM WIDE,
AND CAN BE BUILT TO ANY HEIGHT
BETWEEN 3000 AND 4000MM.
2. ALLOWABLE LOADING ON TOWER PLATFORMS
IS 300KG/M²
BRIDGING PLATFORMS TAKE A POINT LOAD
OF 150KG OR 100KG/M² DISTRIBUTED

THIS DRAWING IS THE PROPERTY OF INSTANT Upright Ltd.
YOU MAY NOT POSSESS, USE, COPY OR DISCLOSE THIS
DOCUMENT OR ANY INFORMATION IN IT, FOR ANY PURPOSE,
INCLUDING THE DESIGN AND MANUFACTURE OF PARTS FOR
SALE, WITHOUT INSTANT Upright's EXPRESS WRITTEN
PERMISSION. NEITHER RECEIPT NOR POSSESSION OF THIS
DOCUMENT ALONE, FROM ANY SOURCE, CONSTITUTES SUCH
PERMISSION AND FAILURE TO COMPLY MAY RESULT IN
CRIMINAL AND/OR CIVIL LIABILITY.

TOLERANCES		DRAWN		DATE		MATERIAL	
0	- 6mm : ±0.1	AM	24JUN09	MATERIAL			
6	- 30mm : ±0.2	SCALE	CHK	MID SIZE			
30	- 120mm : ±0.3	—		FUSELAGE STAGING			
120	- 315mm : ±0.5	—		NUMBER			
315	- 500mm : ±0.8	—		SHT 1			
> 500mm	: ±1.0	—		INSTANT UPRIGHT, UNIT S1			
ANGLE : ±1°		—		INSTANT UPRIGHT, UNIT S1			
		—		PARK WEST DUBLIN 12			