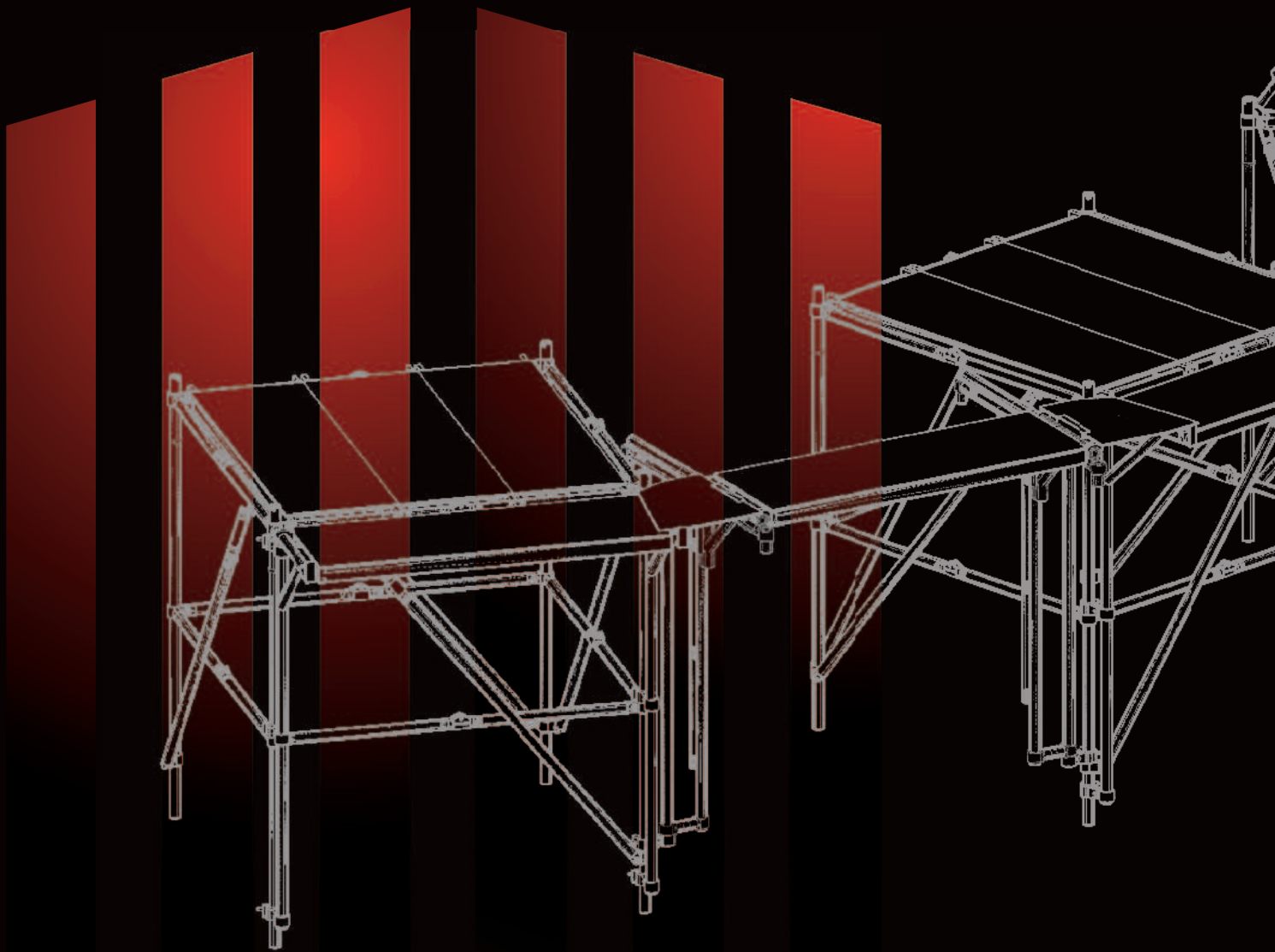


# TankSCAF

QUICK ERECT SYSTEM SCAFFOLDING



# INSTANT

QUALITY & STRENGTH YOU CAN TRUST

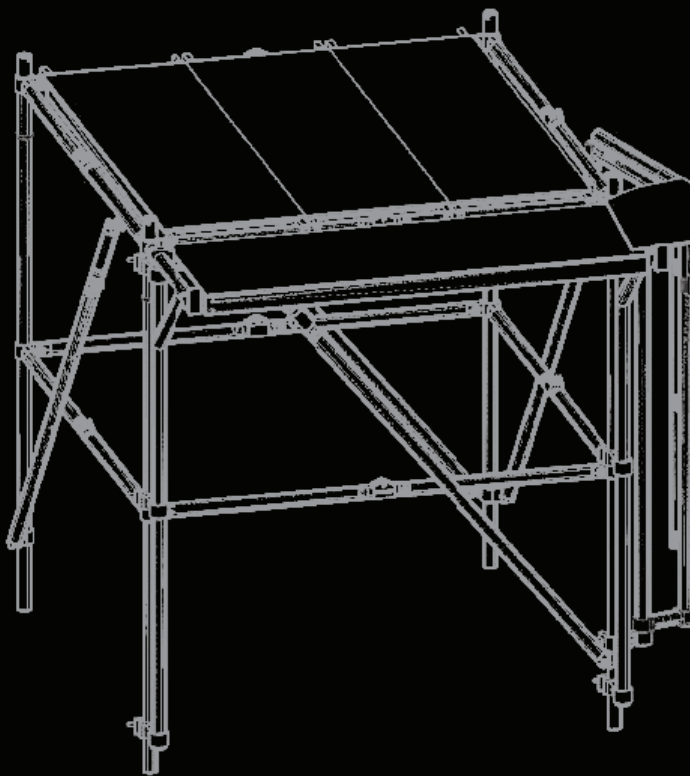
# Instant TankSCAF

QUICK ERECT SYSTEM SCAFFOLDING

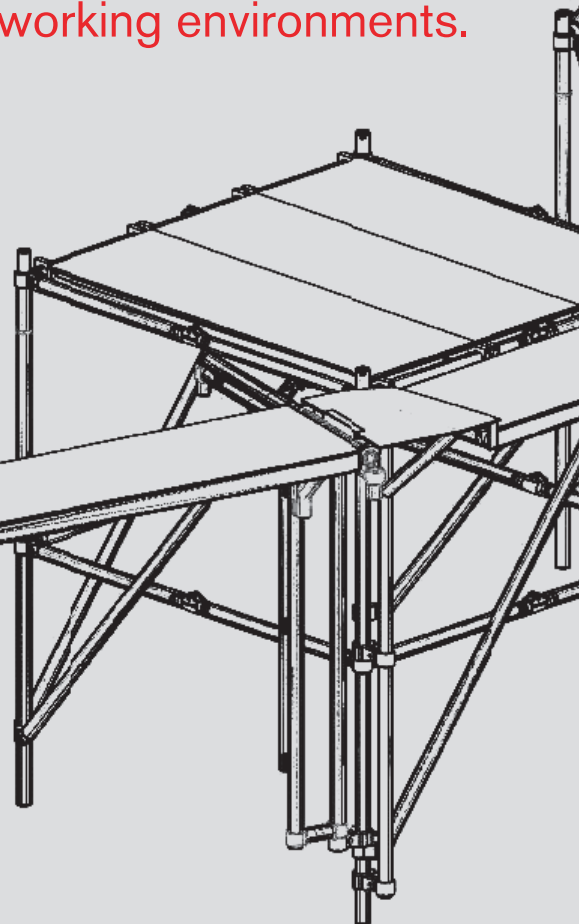
**The Instant TankSCAF is a versatile modular system scaffolding designed and manufactured to meet the most varied internal and external construction demands.**

It can be used as a light weight quick erect solution for access to curved surfaces and complex geometries.

TankSCAF is a flexible system for maintenance and repair work with a wide scope and scale of application. The lightweight heavy-duty system offers safe access to the internal and external surfaces of storage tanks and silos (petrochemicals, water, biodiesel, palm oil, grain.....). The system is ideally suited to the varied access requirements of chemical plants, power stations, bulk storage terminals, paper mills, shipyards and breweries.



Instant TankSCAF uses a combination of Instant Snap-Out Towers, Spandek Walkways, Platforms, K-Braces, Cantilevers and Rotaframes to create fully functional and safe working environments.



# INSTANT

QUALITY & STRENGTH YOU CAN TRUST

# Key Features & Benefits of Instant TankSCAF

## Lightweight corrosion resistant aluminium

- Up to 80% lighter than traditional steel scaffold.
- Compact construction for ease of use, storage and transport.
- Ease of assembly and manoeuvrability.
- Increased productivity and reduced installation costs - fewer components reduces assembly and dismantling times.
- Reduced maintenance schedule time and costs; benefiting scaffolding companies, maintenance companies, plant management and end users.
- Fewer towers can be used than if using a traditional steel scaffold.

## Increase Productivity – Less Components Required/Reduced Costs

- Lightweight (up to 80% lighter) and easy of use.
- Fewer towers and fewer components are required compared to traditional steel scaffolding.
- Less build time resulting in significant labour savings.

### Typical example:

To access the internal wall of a 15.6m diameter storage tank traditionally requires a full wraparound steel scaffold with 552 parts, weighing 8400kg, and taking 36.8 man/hours to erect /dismantle.\*

The Instant TankSCAF system can achieve the same access requirement with 175 parts, weighing 1049kg and taking 12.7 man/hours to erect /dismantle.

A saving of 65% can therefore be made on labour hours.

\*estimated figures based on typical construction/erection times

**Quick-Erect** - the TankSCAF features the Snap-Out system which expands within seconds into a fully braced and rigid 2m cubic tower module. Additional folded Snap-Out modules are lifted into position, instantly locked to the module below and then expanded, until the required platform height is reached.

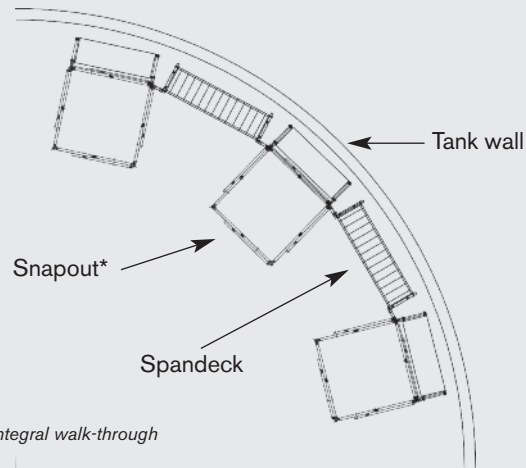
**No Tools Required** - no tools required and no small parts to loose.

**Complies with International Design, Manufacturing and Quality Standards.**



**FEWER** components  
**UP TO 80%** weight reduction  
**LOWER** cost

## Single platform width around an internal tank wall

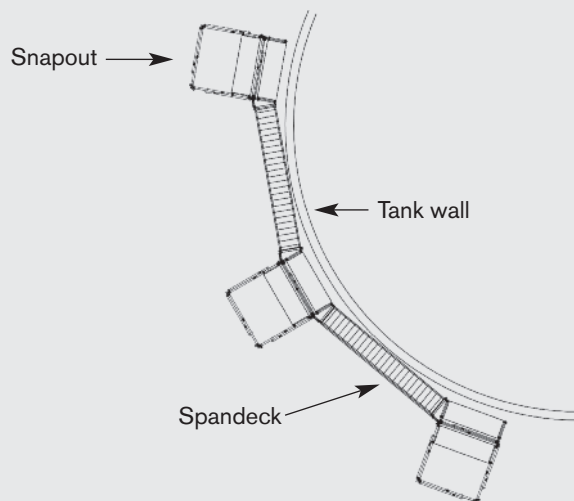


### 17.5m diameter tank and tank height of 10m with an internal walkway at each level

- 3.5m Spandecks: **8**
- Snap-outs: **12**
- Cantilever frames: **24**
- Rotaframes: **16**
- Rotaframe extensions: **0**
- Rotaframe guardrail posts: **24**

Maximum gap to tank wall **170mm**

## Single platform width around an external tank wall

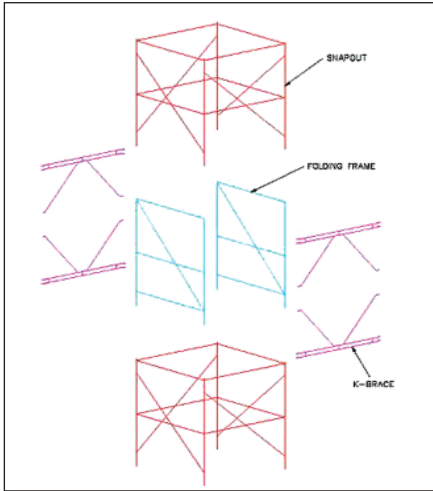


### 20m diameter tank and tank height of 10m with an external walkway at each level

- 4.3m Spandecks: **8**
- Snap-outs: **12**
- Cantilever frames: **24**
- Rotaframes: **16**
- Rotaframe extensions: **0**
- Rotaframe guardrail posts: **24**
- Spandek to Snapout joining plates: **16**

Maximum gap to tank wall **230mm**

## Additional Features & Benefits



### Pipe 'bypass' frame

K braces can be used in system design to build around permanent obstructions such as pipes.



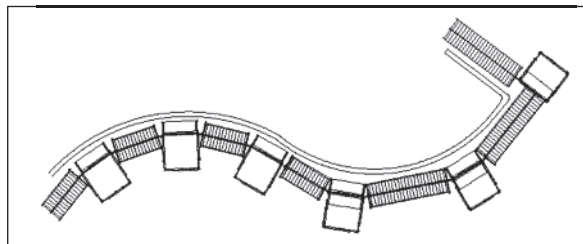
### Rotaframe

The newly designed rotaframe, cantilever walkway system allows the positioning of towers and connecting single or double width Spandek walkways at acute or oblique angles, enabling flexibility in their relative positions and the ability to fit to complex surface geometries.

### Parts list

|            |                                     |
|------------|-------------------------------------|
| E150-100   | Walkthrough Snapout                 |
| E150-101R  | RH Rotaframe                        |
| E150-101L  | LH Rotaframe                        |
| E2161-06   | Platform                            |
| 9586       | Trap Door Platform                  |
| E150-103   | Guard Rail post                     |
| 88012-01   | 3.7m (12') Spandek                  |
| 88014-01   | 4.3m (14') Spandek                  |
| 88016-01   | 5.0m (16') Spandek                  |
| 88018-01   | 5.5m (18') Spandek                  |
| 88020-01   | 6.1m (20') Spandek                  |
| 88022-01   | 6.7m (22') Spandek                  |
| 88024-01   | 7.3m (24') Spandek                  |
| 88112      | 3.7m (12') Spandek Handrail         |
| 88114      | 4.3m (14') Spandek Handrail         |
| 88116      | 5.0m (16') Spandek Handrail         |
| 88118      | 5.5m (18') Spandek Handrail         |
| 88120      | 6.1m (20') Spandek Handrail         |
| 88122      | 6.7m (22') Spandek Handrail         |
| 88124      | 7.3m (24') Spandek Handrail         |
| 650        | Guard Rail Couplers                 |
| E582-38    | Coupler braces                      |
| 9510       | Ladder                              |
| E265-01    | Stabilisers (Large)                 |
| 9600       | Castors (200mm / 8")                |
| 88088      | Toeboard (2.4m / 7'10")             |
| 9598       | Diagonal Snapout Brace              |
| E150-22AB  | Horizontal Snapout Guard Rail Brace |
| E150-107   | K Brace                             |
| E150-106   | Folding Frame                       |
| E150-105AL | Infill Deck Left                    |
| E150-105AR | Infill Deck Right                   |

Braces & Outriggers must be added separately. Ask manufacturer for appropriate brace and outrigger part numbers to suit the system.



### Flexible design

The rotaframe system allows the TankScaf system to be adjusted on site to best fit the profile of the surface.

# INSTANT

Instant UpRight Ltd.  
Unit S1, Park West Industrial Park,  
Friel Avenue, Nangor Road, Dublin 12, Ireland.

T: +353 (0)1 6209300 F: +353 (0)1 6209301  
info@instantupright.com  
www.instantupright.com

For safe use and assembly please refer to manufacturer's assembly guide.  
Specifications are subject to change without notice.  
The photographs in this brochure are for promotional purposes only.

(QD 038)

MANUFACTURED BY  
**INSTANT  
UPRIGHT**  
www.instantupright.com