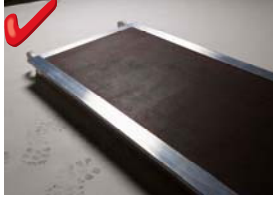


Aluminium Mobile Access Tower

Inspection Guide

PLATFORMS



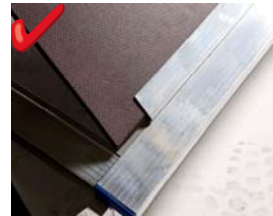
Plywood:

- . In place
- . Secure
- . No cracks, cuts, holes or rot
- . Laminations intact
- . Non-slip coating facing upwards, undamaged and no excessive paint plaster, oil or other contaminants
- . Check for rotting plywood



Platform Fixings:

- . Rivets/screw heads in place
- . Secure



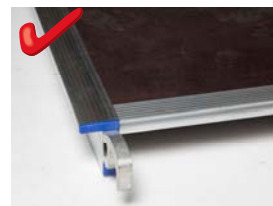
Trapdoor hinges and latch:

- . In place
- . Secure
- . No excessive wear or corrosion
- . Hinges, latch opening freely



Platform framework:

- . No damage, cracks, holes or excessive corrosion especially around the hooks
- . Check all rivets and fixings are secure
- . Diagonal dimensions are equal within 5mm
- . Check platform is flat within 15mm
- . Wind locks operate correctly and easily
- . Label showing maximum permissible platform load is in place, secure and legible



Please note: Periodically lubricate hinges



FRAMES



Tubes and corner gussets:

- Maximum deflection 5mm in 1000mm
- No excessive denting or creasing (Max:10mm deep/60cm²)
- No more than one dent in 300mm length
- No dents in the centre 1/3 of horizontal cross-tubes
- No cracks, cuts, holes or excessive corrosion



Joints:

- No cracks or excessive corrosion in welds or surrounding metal
- No cracks or excessive corrosion in castings
- Joints at right angle
- No paint over welds or joints that would prevent crack detection
- No excessive movement in crimped joints



Spigots:

- In place and not distorted
- Securely retained with no damage or excessive wear to any fixing
- No damage or excessive wear to any interlock holes



Built in Ladders:

- Sides and rungs straight with no cracks, cuts or excessive corrosion.
- No cracks or excessive corrosion in welds or surrounding metal
- Rungs in place and secure
- No excessive paint, plaster, oils and other contaminants



Interlock Clip/ Locking device (where fitted):

- In position and operating correctly
- No damage, distortion, excessive wear or corrosion
- retaining pin in place, undamaged and engages



Folding Frames/Braces:

- Frames/braces open and close
- Retaining mechanism, locking pate or other locking devices in place, undamaged, operating correctly and with no excessive wear
- All fixings, castings secure



Labels:

- Labels securely attached and legible

BRACES



Tubes::

- . Maximum deflection 5mm in 1000mm length
- . No excessive denting or creasing (Max:10mm deep/60cm²)
- . No more than one dent in a 300mm length
- . No cracks, cuts, holes or excessive corrosion



Hooks:

- . No damage or excessive corrosion and hook working correctly
- . Latch hook onto a piece of frame tube. Using moderate to heavy force, ensure hook cannot become detached unintentionally

STABILISERS



Tubes:

- . Maximum deflection 5mm in 1000mm length
- . No excessive denting or creasing (Max:10mm deep/60cm²)
- . No more than one dent in 300mm length
- . No cracks, cuts, holes or excessive corrosion, or excessive paint, plaster etc



Clamps:

- . Clamps in place, undamaged and operating correctly
- . No cracks in castings
- . No damage or excessive wear to threads
- . Pivots rotate freely



Feet:

- . Pivot rotates freely
- . No cracks, excessive wear or other damage
- . Check security of the fastenings for the pad/foot

TOEBOARDS & CLIPS



Boards:

- . No splits or cracks
- . No excessive warping

Clips (where fitted)

- . Fit clip to lower tube to check operates correctly

CASTORS



Castors:

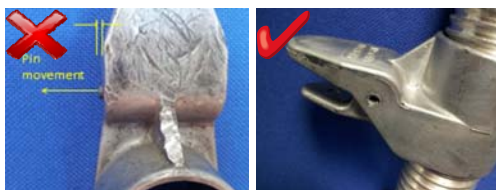
- Check brake operates correctly
- No excessive wear or damage in the wheel, spigot and swivel bearings
- Wheel rotates freely on axle
- Removable castors retained securely by spring ball
- Fixed castors securely retained by expanding spigots



Base plates:

- No excessive buckling or corrosion
- Plate secure on stem
- Fit base plate into adjustable leg and check it is retained in position

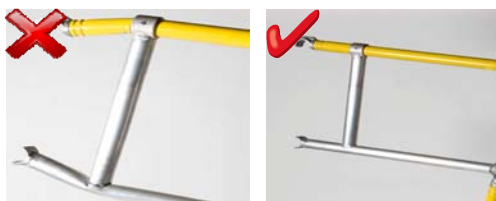
ADJUSTABLE LEG



All parts:

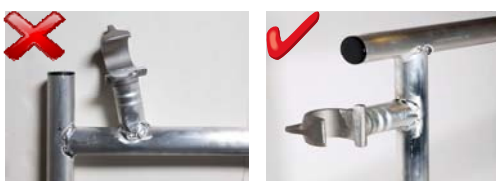
- Stem is straight, free from dents with a maximum deflection of 5mm over the entire length
- No cracks, cuts or holes or excessive wear, damage or corrosion
- Check retaining spring in place
- Leg fits into frame tube and is retained by spring/plug
- Castor fits into the adjustable leg
- Locking Nut should move freely up and down leg
- Pins to be secure (tight fit) and centrally located

ADVANCE GUARDRAIL



Advance Guardrail:

- Maximum deflection 5mm in 1000mm length
- No excessive denting or creasing (Max:10mm deep/60cm²)
- No more than one dent in 300mm
- Swinging arm operates freely and locks securely
- No cracks, cuts, holes or excessive corrosion
- No damage, cracks in welds



Hooks:

- No damage or excessive corrosion and hook works correctly
- Latch hook onto a piece of frame tube. Using moderate to heavy force, ensure hook cannot become detached unintentionally